



الورشة التدريبية عن بعد حول تعزيز القدرة الجغرافية المكانية في تعدادات السكان والمساكن للبلدان العربية

20-23 يوليو / تموز 2020

منصة المعهد العربي للتدريب والبحوث الإحصائية

UNFPA

Delivering a world where
every pregnancy is wanted
every childbirth is safe and
every young person's
potential is fulfilled

Introduction to hybrid census

Regional Virtual Workshop on GIS in Census

Renee Sorchik

Mohamed Abd salam EL Vilaly

23 July, 2020

AITRS, Amman, Jordan



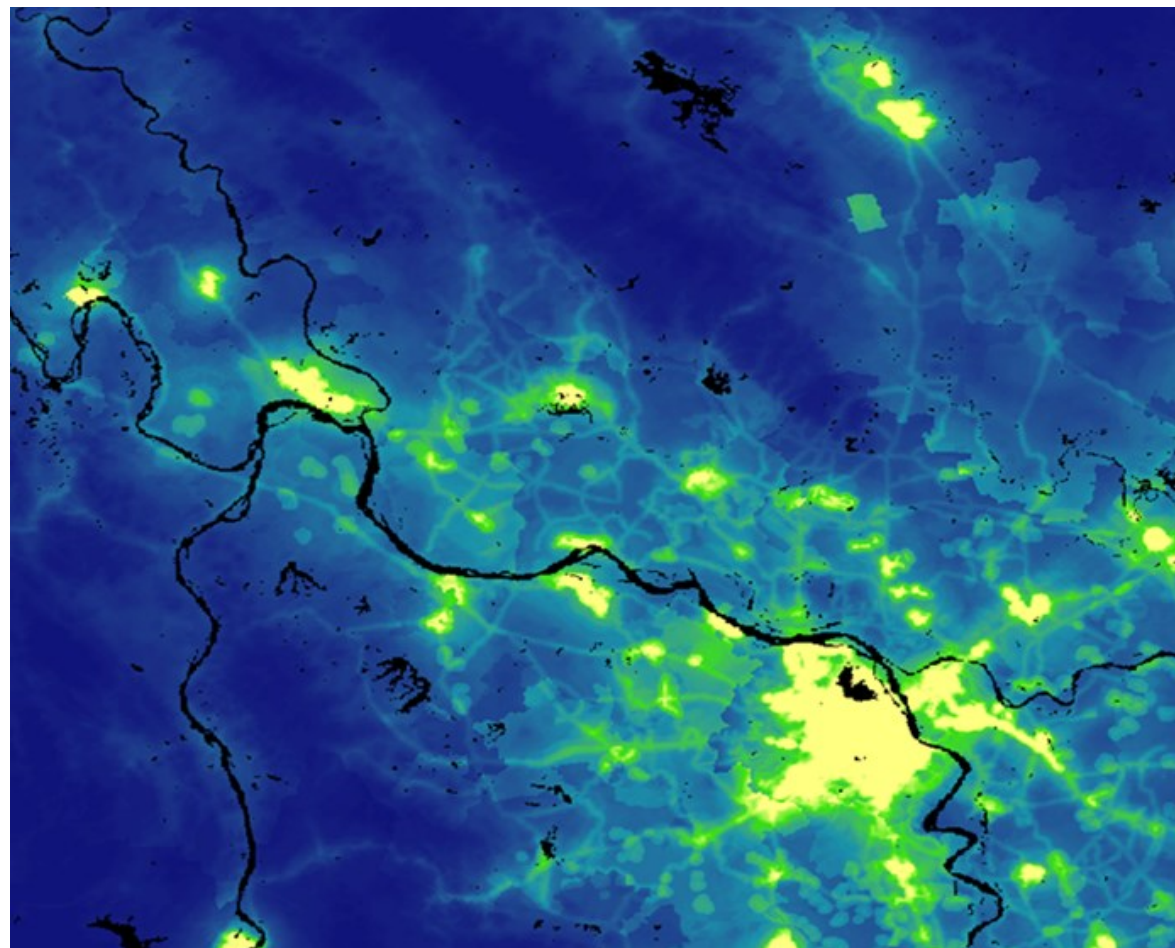
UNFPA support in humanitarian settings



- UNFPA seeks to ensure all countries wishing to complete a census in the 2020 round are able to do so, both in development and humanitarian settings
- In 2019, 9.3 million refugees and asylum seekers in the Arab States Region - account for 9.3% of the population in the region.
- Data for decision makers is just as, if not more, important for decision makers in humanitarian settings
- Modeled population estimates are one innovative way UNFPA is providing support to countries with humanitarian situations
- Special priority to those countries who did not complete a census in the 2010 round

“Hybrid Census” - What is it?

- Also known as modeled population estimates, a “hybrid census” is an innovative statistical modelling methodology to estimate population counts for a country where a full census is not feasible
- Modelling requires some data from partial enumeration or surveys, GIS data and satellite imagery



When is a “Hybrid Census” appropriate?

- **Where full census enumeration is not possible**, i.e. where parts of the country are not reachable for enumeration due to **insecurity**, disaster, etc.
- Modeled population estimates can also generate inter-censal estimates and can help update national sampling frames
- Hybrid censuses should **NOT** replace traditional censuses in countries where full enumeration is possible

