



*Empowered lives.  
Resilient nations.*

# UNDP SDG 16 CUSTODIAN INDICATORS

---

Julia Kercher  
Oslo Governance Centre  
[Julia.Kercher@undp.org](mailto:Julia.Kercher@undp.org)



*Empowered lives.  
Resilient nations.*

# Overview

---

**SDG 16  
overview**

**UNDP  
Custodianship**

**UNDP SDG 16  
Support**



*Empowered lives.  
Resilient nations.*

# SDG 16 overview

---

# SDG 16's 12 Global Targets

**TARGET 16-1**



**REDUCE VIOLENCE EVERYWHERE**

**TARGET 16-2**



**PROTECT CHILDREN FROM ABUSE, EXPLOITATION, TRAFFICKING AND VIOLENCE**

**TARGET 16-3**



**PROMOTE THE RULE OF LAW AND ENSURE EQUAL ACCESS TO JUSTICE**

**TARGET 16-4**



**COMBAT ORGANIZED CRIME AND ILLICIT FINANCIAL AND ARMS FLOWS**

**TARGET 16-5**



**SUBSTANTIALLY REDUCE CORRUPTION AND BRIBERY**

**TARGET 16-6**



**DEVELOP EFFECTIVE, ACCOUNTABLE AND TRANSPARENT INSTITUTIONS**

**TARGET 16-7**



**ENSURE RESPONSIVE, INCLUSIVE AND REPRESENTATIVE DECISION-MAKING**

**TARGET 16-8**



**STRENGTHEN THE PARTICIPATION IN GLOBAL GOVERNANCE**

**TARGET 16-9**



**PROVIDE UNIVERSAL LEGAL IDENTITY**

**TARGET 16-10**



**ENSURE PUBLIC ACCESS TO INFORMATION AND PROTECT FUNDAMENTAL FREEDOMS**

**TARGET 16-A**



**STRENGTHEN NATIONAL INSTITUTIONS TO PREVENT VIOLENCE AND COMBAT TERRORISM AND CRIME**

**TARGET 16-B**

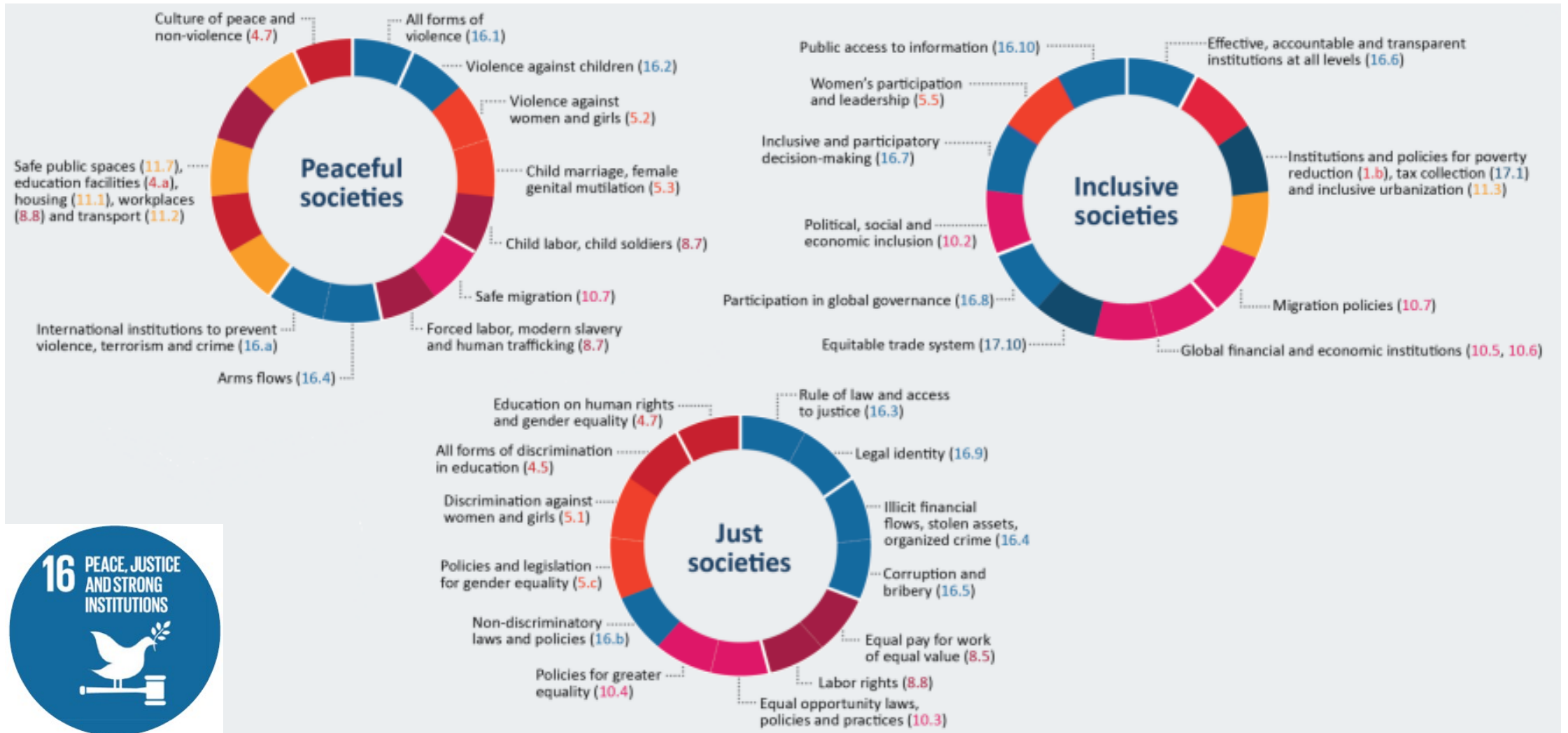


**PROMOTE AND ENFORCE NON-DISCRIMINATORY LAWS AND POLICIES**

# SDG 16+ Peace, Justice and Inclusion



Empowered lives.  
Resilient nations.





*Empowered lives.  
Resilient nations.*

# UNDP custodianship

---

# UNDP SDG 16 CUSTODIAN INDICATORS

16.3.3

Access to  
dispute resolution  
mechanisms



16.6.2

Satisfaction with  
public services



16.7.1b

Inclusive  
representation in  
the public service



16.7.1c

Inclusive  
representation in  
the judiciary



16.7.2

Inclusive and  
responsive  
decision-making



*Empowered lives.  
Resilient nations.*

## UNDP SDG 16 CUSTODIAN INDICATORS

*New!*

With OECD  
and UNODC

**16.3.3**

Access to  
dispute resolution  
mechanisms



Measures accessibility of justice institutions and mechanisms (formal and informal) for civil matters

**16.6.2**

Satisfaction  
with public  
services



Measures levels of public satisfaction with last experience of public services, in the three areas of healthcare, education and government services (i.e. IDs and civil registration)

Survey-  
Based



## UNDP SDG 16 CUSTODIAN INDICATORS

Administrative  
Data

**16.7.1b**

Inclusive  
representation in  
the public service



Measures the extent to which a country's public service is representative of the general population, with a focus on women, youth, persons with a disability and nationally relevant population groups

Administrative  
Data

**16.7.1c**

Inclusive  
representation  
in the judiciary



Measures the extent to which a country's judiciary is representative of the general population, with a focus on two key decision-making positions in courts: judges and registrars

# UNDP SDG 16 CUSTODIAN INDICATORS



Empowered lives.  
Resilient nations.

Survey-  
Based

**16.7.2**

Inclusive and  
responsive  
decision-making



Measures the extent to which people believe that the government will listen to, and act on, the opinions of citizens





# Role of Custodian Agencies

---

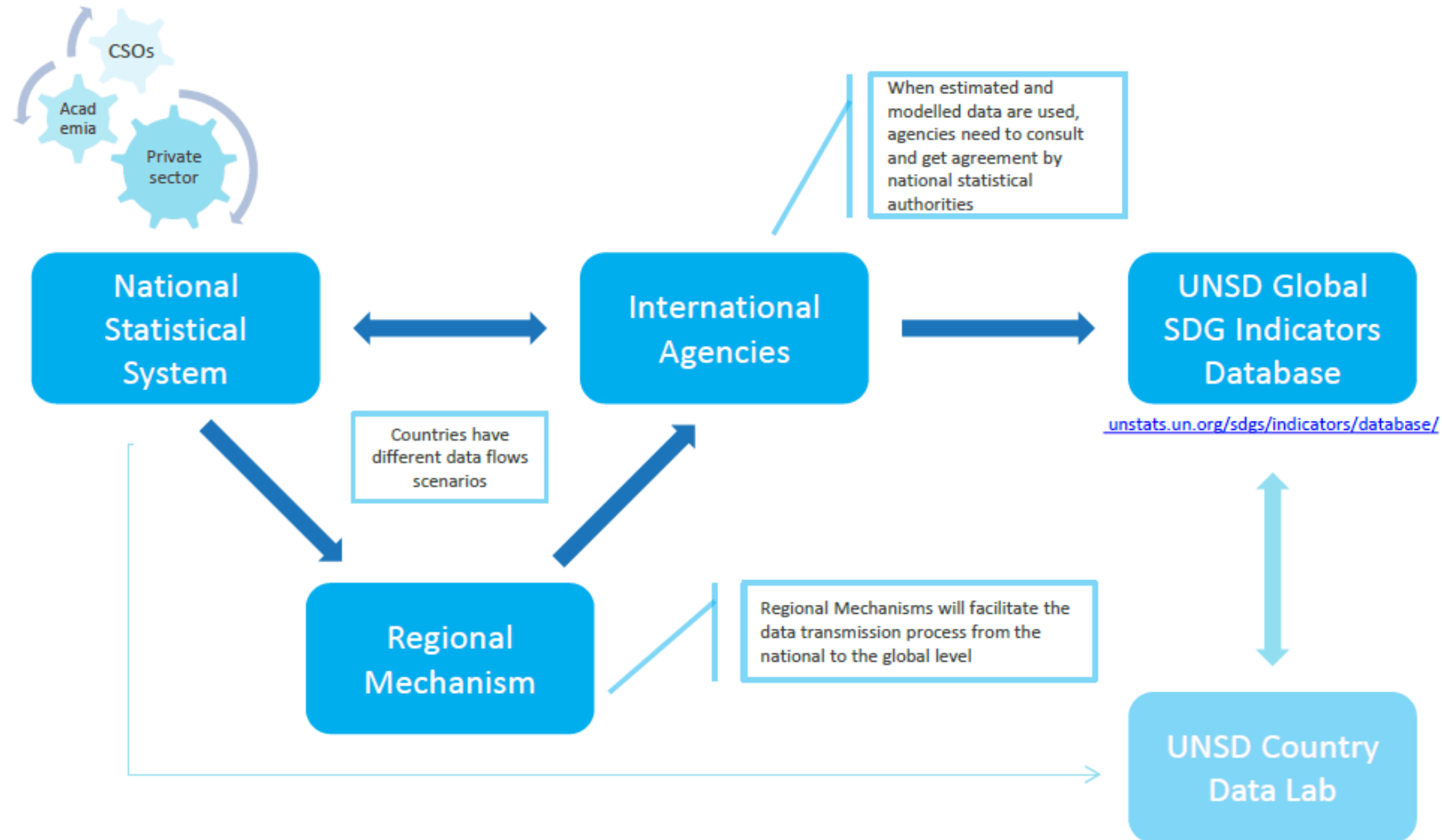


Empowered lives.  
Resilient nations.

For **Tier II** Indicators:

- Help ensure comparability of country data 
- Support capacity development of data producers 
- Compute regional and global aggregates 
- Provide data for the global SDG indicator database 

# Data flows





*Empowered lives.  
Resilient nations.*

# UNDP SDG 16 Support

---

# Data Reporting Platform

- For all for all five indicators
- Direct access and data input by NSOs
- UNDP country offices can view data
- Annual reporting calendar

Choose Login

Login for UNDP staff  
with UNDP username  
and password

Login for National Statistical  
System focal points



*Empowered lives.  
Resilient nations.*

## SDG 16 Survey Initiative

- Nine SDG 16 indicators draw on population surveys
- Population surveys = good data source: high data quality, disaggregation
- Challenge for NSOs: regular implementation comes with high costs
- “SDG 16 Survey Module” by UNDP, UNODC and OHCHR: to integrate survey modules in on-going household surveys



# SDG 16 Survey Modules



Empowered lives.  
Resilient nations.

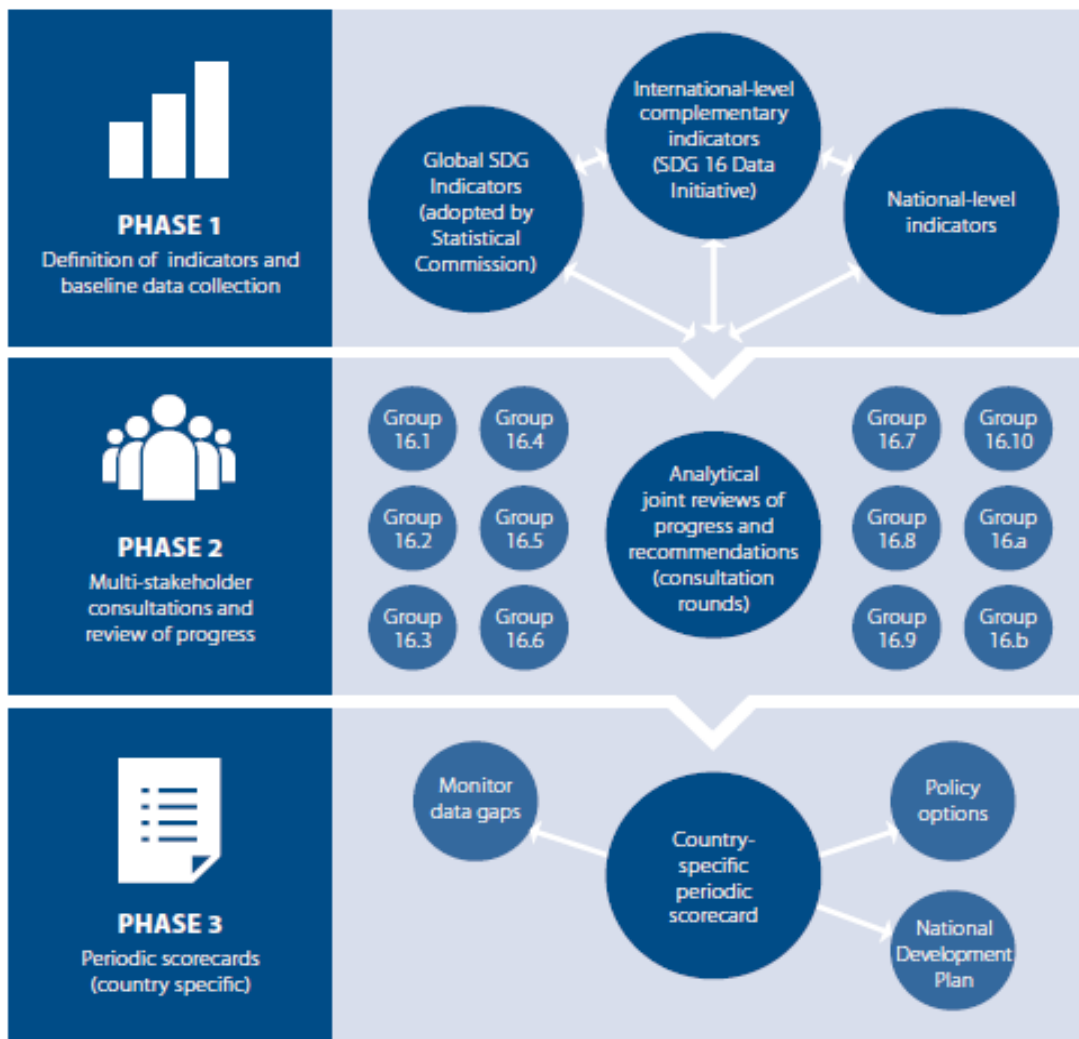
Overview of SDG 16 Survey Modules	
<b>1. Violence</b>	
<b>Physical violence</b>	16.1.3(a) Proportion of population subjected to (a) physical violence in the previous 12 months 16.1.3(c) Proportion of population subjected to (c) sexual violence in the previous 12 months
<b>Psychological violence and Harassment</b>	11.7.2: Proportion of persons victim of physical or sexual harassment in the previous 12 months 16.1.3(b) Proportion of population subjected to (b) psychological violence in the previous 12 months
<b>Violence reporting</b>	16.3.1 Proportion of victims of violence in the previous 12 months who reported their victimization to competent authorities or other officially recognized conflict resolution mechanisms
<b>Safety</b>	16.1.4 Proportion of population that feel safe walking alone around the area they live
<b>2. Human Trafficking</b>	
	Indicator 16.2.2: Number of victims of human trafficking per 100,000 population, by sex, age and form of exploitation
<b>3. Corruption</b>	
	16.5.1 Proportion of persons who had at least one contact with a public official and who paid a bribe to a public official, or were asked for a bribe by those public officials, during the previous 12 months
<b>4. Governance</b>	
<b>Political efficacy</b>	16.7.2 Proportion of population who believe decision-making is inclusive and responsive
<b>Satisfaction with public services</b>	16.6.2 Proportion of the population satisfied with their last experience of public services
<b>5. Access to justice</b>	
	16.3.3. Proportion of the population who have experienced a dispute in the past two years and who accessed a formal or informal dispute resolution mechanism, by type of mechanism.
<b>6. Discrimination</b>	
	16.b.1 Proportion of the population reporting having personally felt discriminated against or harassed in the previous 12 months on the basis of a ground of discrimination prohibited under international human rights law



# SDG 16 National Monitoring Initiative: 3-step methodology



Empowered lives.  
Resilient nations.



## Pilot Countries:

- El Salvador
- Georgia
- Indonesia
- Mexico
- South Africa
- Tunisia
- Uruguay

## Scale-Up Countries:

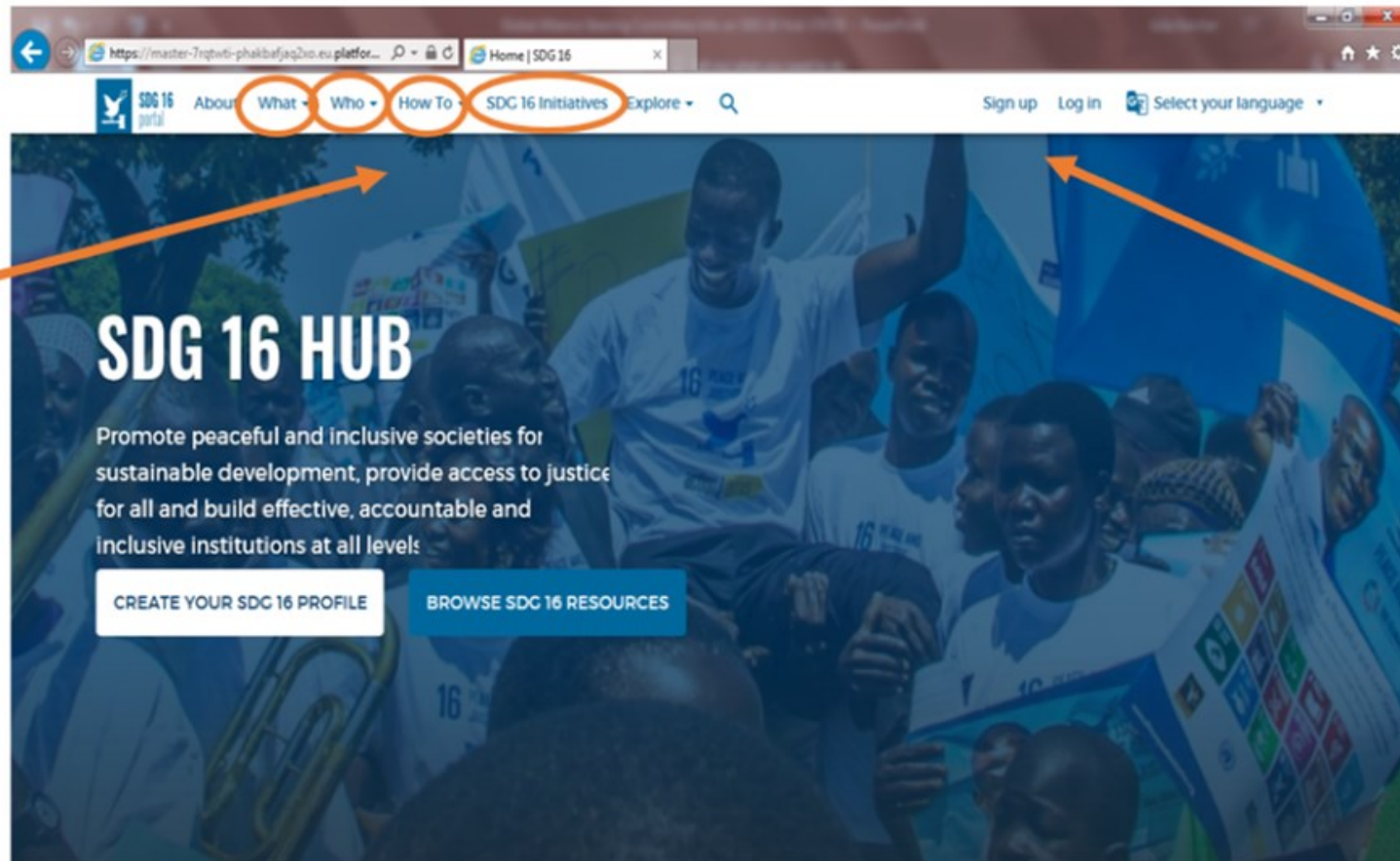
- Argentina
- Burkina Faso
- Cape Verde
- Central African Republic
- Colombia
- Lebanon
- Moldova
- Mongolia

Community of Practice

# SDG 16 Hub



Empowered lives.  
Resilient nations.



## Curated Content

- WHAT
- WHO
- HOW TO
- SDG 16 Initiatives

## Interactive Space:

- Profile
- Groups
- Discussions

A large, dark, irregular shape, possibly a shadow or a splash, occupies the left side of the image. It has a rough, textured appearance with some lighter spots and a jagged edge. The rest of the image is a plain, light-colored background.

**Thank you!**